

Resource

TYPE Human



Name

Archaeologist

Description

Researcher who studies human beings of the past, their evolution, lifeways and cultures.

01/66

Resource

TYPE Human



Name

Archaeologist

Description

Researcher who studies human beings of the past, their evolution, lifeways and cultures.

02/66

Resource

TYPE Human



Name

Palaeoanthropologist

Descrição

Researcher who studies human biology in the past (origins, evolution and physical variations).

03/66

Resource

TYPE Human



Name

Zooarchaeologist

Description

Researcher who studies faunal remains (animal fossils) found in archaeological sites.

04/66

Resource

TYPE Human



Name

Zooarchaeologist

Description

Researcher who studies faunal remains (animal fossils) found in archaeological sites.

05/66

Resource

TYPE Human



Name

Lithics Specialist

Descrição

Researcher who studies lithic artifacts (stone tools) found in archaeological sites.

06/66

Resource

TYPE Human



Name

Archaeobotanist

Description

Researcher who studies botanical remains (e.g. seeds and charcoal) found in archaeological sites.

07/66

Resource

TYPE Human



Name

Archaeobotanist

Description

Researcher who studies botanical remains (e.g. seeds and charcoal) found in archaeological sites.

08/66

Resource

TYPE Human



Name

Geoarchaeologist

Description

Researcher who brings together geological and archaeological knowledge to understand how an archaeological site was formed.

09/66

InMoz
PTDC/HAR-ARQ/28146/2017



centro
ciência viva
algarve

InMoz
PTDC/HAR-ARQ/28146/2017



centro
ciência viva
algarve

InMoz
PTDC/HAR-ARQ/28146/2017



centro
ciência viva
algarve

InMoz
PTDC/HAR-ARQ/28146/2017



centro
ciência viva
algarve

InMoz
PTDC/HAR-ARQ/28146/2017



centro
ciência viva
algarve

InMoz
PTDC/HAR-ARQ/28146/2017



centro
ciência viva
algarve

InMoz
PTDC/HAR-ARQ/28146/2017



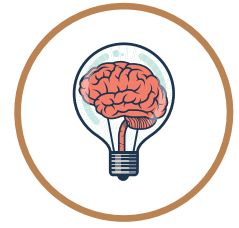
centro
ciência viva
algarve

InMoz
PTDC/HAR-ARQ/28146/2017



centro
ciência viva
algarve

InMoz
PTDC/HAR-ARQ/28146/2017



centro
ciência viva
algarve

Resource

TYPE Human



Name

Geoarchaeologist

Description

Researcher who brings together geological and archaeological knowledge to understand how an archaeological site was formed.

10/66

Resource

TYPE Human



Name

GIS Specialist

Description

Researcher who geo-locates all the archaeological and geological data in the field to make maps.

11/66

Resource

TYPE Human



Name

GIS Specialist

Description

Researcher who geo-locates all the archaeological and geological data in the field to make maps.

12/66

Resource

TYPE Human



Name

Geologist

Description

Researcher who studies processes involved in the Earth's formation and evolution through time.

13/66

Resource

TYPE Human



Name

Geologist

Description

Researcher who studies processes involved in the Earth's formation and evolution through time.

14/66

Resource

TYPE Human



Name

Geomorphologist

Description

Researcher who studies landforms and the processes leading to their formation and evolution.

15/66

Resource

TYPE Human



Name

Geomorphologist

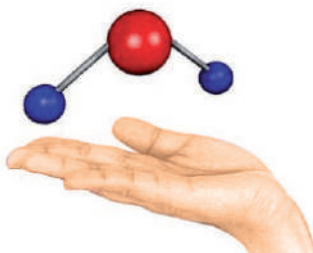
Description

Researcher who studies landforms and the processes leading to their formation and evolution.

16/66

Resource

TYPE Human



Name

Geochemist

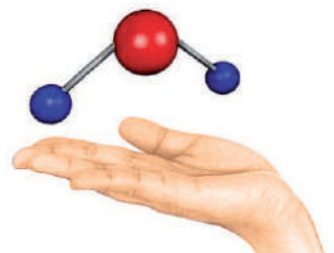
Description

Researcher who studies the chemical composition of rocks, sediments, soils and water, as well as chemical cycles of the Earth's elements.

17/66

Resource

TYPE Human



Name

Geochemist

Description

Researcher who studies the chemical composition of rocks, sediments, soils and water, as well as chemical cycles of the Earth's elements.

18/66

InMoz
PTDC/HAR-ARQ/28146/2017



centro
ciência viva
algarve

InMoz
PTDC/HAR-ARQ/28146/2017



centro
ciência viva
algarve

InMoz
PTDC/HAR-ARQ/28146/2017



centro
ciência viva
algarve

InMoz
PTDC/HAR-ARQ/28146/2017



centro
ciência viva
algarve

InMoz
PTDC/HAR-ARQ/28146/2017



centro
ciência viva
algarve

InMoz
PTDC/HAR-ARQ/28146/2017



centro
ciência viva
algarve

InMoz
PTDC/HAR-ARQ/28146/2017



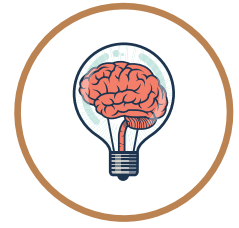
centro
ciência viva
algarve

InMoz
PTDC/HAR-ARQ/28146/2017



centro
ciência viva
algarve

InMoz
PTDC/HAR-ARQ/28146/2017



centro
ciência viva
algarve

Resource

TYPE Human



Name

Sedimentologist

Description

Researcher who studies sediments (their structure, composition and texture).

19/66

Resource

TYPE Human



Name

Biologist

Description

Researcher who studies life and living organisms.

20/66

Resource

TYPE Human



Name

Biologist

Description

Researcher who studies life and living organisms.

21/66

Resource

TYPE Human



Name

Ecologist

Description

Researcher who studies relationships between organisms and their environment.

22/66

Resource

TYPE Human



Name

Ecologist

Description

Researcher who studies relationships between organisms and their environment.

23/66

Resource

TYPE Human



Name

Palaeontologist

Description

Researcher who studies the history of life on Earth and its development through geological time, as well as the processes that affect fossils in the geological record.

24/66

Resource

TYPE Human



Name

Palaeontologist

Description

Researcher who studies the history of life on Earth and its development through geological time, as well as the processes that affect fossils in the geological record.

25/66

Resource

TYPE Human



Name

Diatom Specialist

Description

Researcher who studies diatoms (microscopic algae).

26/66

Resource

TYPE Human



Name

Palynologist

Description

Researcher who studies pollen and spores (microscopic plant fossils).

27/66

InMoz
PTDC/HAR-ARQ/28146/2017



centro
ciência viva
algarve

InMoz
PTDC/HAR-ARQ/28146/2017



centro
ciência viva
algarve

InMoz
PTDC/HAR-ARQ/28146/2017



centro
ciência viva
algarve

InMoz
PTDC/HAR-ARQ/28146/2017



centro
ciência viva
algarve

InMoz
PTDC/HAR-ARQ/28146/2017



centro
ciência viva
algarve

InMoz
PTDC/HAR-ARQ/28146/2017



centro
ciência viva
algarve

InMoz
PTDC/HAR-ARQ/28146/2017



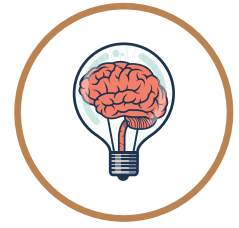
centro
ciência viva
algarve

InMoz
PTDC/HAR-ARQ/28146/2017



centro
ciência viva
algarve

InMoz
PTDC/HAR-ARQ/28146/2017



centro
ciência viva
algarve

Resource

TYPE Human



Name

Palynologist

Description

Researcher who studies pollen and spores (microscopic plant fossils).

28/66

Resource

TYPE Human



Name

Ostracod Specialist

Description

Researcher who studies ostracods (microscopic crustaceans).

29/66

Resource

TYPE Traditional leader



Name

Chief

Description

The Chief holds knowledge about the history of the dunes and is responsible for protecting their natural and cultural heritage.

This card gives you 1 point for "Making Knowledge" if you hold a "Dune" card, replacing the resources needed on this card.

30/66

Resource

TYPE Traditional leader



Name

Chief

Description

The Chief holds knowledge about the history of the dunes and is responsible for protecting their natural and cultural heritage.

This card gives you 1 point for "Making Knowledge" if you hold a "Dune" card, replacing the resources needed on this card.

31/66

Resource

TYPE Traditional leader



Name

Lake Custodian

Description

The Lake Custodian holds knowledge about the history of the dunes and is responsible for protecting their cultural and natural heritage.

This card gives you 1 point for "Making Knowledge" if you hold a "Lake" card, replacing the resources needed on this card.

32/66

Resource

TYPE Traditional leader



Name

Lake Custodian

Description

The Lake Custodian holds knowledge about the history of the dunes and is responsible for protecting their cultural and natural heritage.

This card gives you 1 point for "Making Knowledge" if you hold a "Lake" card, replacing the resources needed on this card.

33/66

Resource

TYPE Material



Name

Grain-size analyser

Description

Equipment for measuring the grain size of sediments.

34/66

Resource

TYPE Material



Name

Grain-size analyser

Description

Equipment for measuring the grain size of sediments.

35/66

Resource

TYPE Material



Name

Elemental analyser

Description

Equipment for analysing the chemical composition of sediments.

36/66

InMoz
PTDC/HAR-ARQ/28146/2017



centro
ciência viva
algarve

InMoz
PTDC/HAR-ARQ/28146/2017



centro
ciência viva
algarve

InMoz
PTDC/HAR-ARQ/28146/2017



centro
ciência viva
algarve

InMoz
PTDC/HAR-ARQ/28146/2017



centro
ciência viva
algarve

InMoz
PTDC/HAR-ARQ/28146/2017



centro
ciência viva
algarve

InMoz
PTDC/HAR-ARQ/28146/2017



centro
ciência viva
algarve

InMoz
PTDC/HAR-ARQ/28146/2017



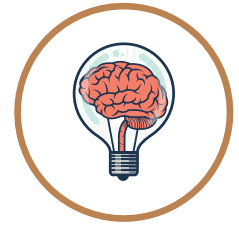
centro
ciência viva
algarve

InMoz
PTDC/HAR-ARQ/28146/2017



centro
ciência viva
algarve

InMoz
PTDC/HAR-ARQ/28146/2017



centro
ciência viva
algarve

Resource

TYPE Material



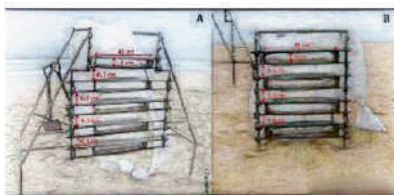
Name
Elemental analyser

Description
Equipment for analysing the chemical composition of sediments.

37/66

Resource

TYPE Material



Name
Sediment traps

Description
Equipment that catches sediment particles.

38/66

Resource

TYPE Material



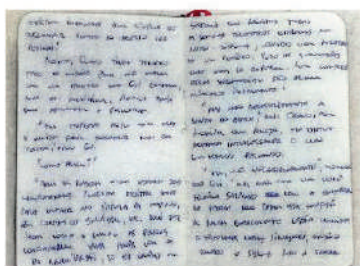
Name
Sediment traps

Description
Equipment that catches sediment particles.

39/66

Resource

TYPE Material



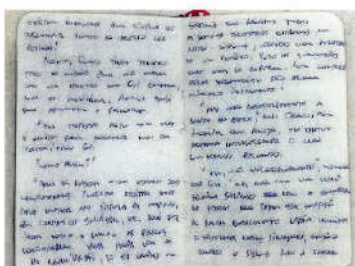
Name
Field notebook

Description
Notebook with all the information collected during fieldwork.

40/66

Resource

TYPE Material



Name
Field notebook

Description
Notebook with all the information collected during fieldwork.

41/66

Resource

TYPE Material



Name
ID guide

Description
Book with images and descriptions of different species to help identify them.

42/66

Resource

TYPE Material



Name
ID guide

Description
Book with images and descriptions of different species to help identify them.

43/66

Resource

TYPE Material



Name
ID guide

Description
Book with images and descriptions of different species to help identify them.

44/66

Resource

TYPE Material



Name
Trowel

Description
Tool used in excavation.

45/66

InMoz
PTDC/HAR-ARQ/28146/2017



centro
ciência viva
algarve

InMoz
PTDC/HAR-ARQ/28146/2017



centro
ciência viva
algarve

InMoz
PTDC/HAR-ARQ/28146/2017



centro
ciência viva
algarve

InMoz
PTDC/HAR-ARQ/28146/2017



centro
ciência viva
algarve

InMoz
PTDC/HAR-ARQ/28146/2017



centro
ciência viva
algarve

InMoz
PTDC/HAR-ARQ/28146/2017



centro
ciência viva
algarve

InMoz
PTDC/HAR-ARQ/28146/2017



centro
ciência viva
algarve

InMoz
PTDC/HAR-ARQ/28146/2017



centro
ciência viva
algarve

InMoz
PTDC/HAR-ARQ/28146/2017



centro
ciência viva
algarve

Resource

TYPE Material



Name

Trowel

Description

Tool used in excavation.

46/66

Resource

TYPE Material



Name

Drone

Description

Small aircraft for collecting data remotely (from above).

47/66

Resource

TYPE Material



Name

Drone

Description

Small aircraft for collecting data remotely (from above).

48/66

Resource

TYPE Material



Name

GPS

Description

Device for finding a place's geographic coordinates/location.

49/66

Resource

TYPE Material



Name

GPS

Description

Device for finding a place's geographic coordinates/location.

50/66

Resource

TYPE Material



Name

Satellite images

Description

Images collected by satellites (objects sent into orbit around the Earth to collect and transmit data).

51/66

Resource

TYPE Material



Name

Satellite images

Description

Images collected by satellites (objects sent into orbit around the Earth to collect and transmit data).

52/66

Resource

TYPE Material



Name

Laboratory

Description

Room equipped for conducting scientific experiments and analyses.

53/66

Resource

TYPE Material



Name

Laboratory

Description

Room equipped for conducting scientific experiments and analyses.

54/66

InMoz
PTDC/HAR-ARQ/28146/2017



centro
ciência viva
algarve

InMoz
PTDC/HAR-ARQ/28146/2017



centro
ciência viva
algarve

InMoz
PTDC/HAR-ARQ/28146/2017



centro
ciência viva
algarve

InMoz
PTDC/HAR-ARQ/28146/2017



centro
ciência viva
algarve

InMoz
PTDC/HAR-ARQ/28146/2017



centro
ciência viva
algarve

InMoz
PTDC/HAR-ARQ/28146/2017



centro
ciência viva
algarve

InMoz
PTDC/HAR-ARQ/28146/2017



centro
ciência viva
algarve

InMoz
PTDC/HAR-ARQ/28146/2017



centro
ciência viva
algarve

InMoz
PTDC/HAR-ARQ/28146/2017



centro
ciência viva
algarve

Resource

TYPE Material



Name

Laboratory

Description

Room equipped for conducting scientific experiments and analyses.

55/66

Resource

TYPE Material



Name

Laboratory

Description

Room equipped for conducting scientific experiments and analyses.

56/66

Resource

TYPE Material



Name

Lens

Description

Tool for magnifying objects and organisms.

57/66

Resource

TYPE Material



Name

Lens

Description

Tool for magnifying objects and organisms.

58/66

Resource

TYPE Material



Name

Microscope

Description

Equipment for magnifying microscopic objects and organisms.

59/66

Resource

TYPE Material



Name

Microscope

Description

Equipment for magnifying microscopic objects and organisms.

60/66

Resource

TYPE Material



Name

Coring platform

Description

Floating structure for collecting cores (i.e. extracting sediments from the bottom of the lake).

61/66

Resource

TYPE Material



Name

Multiparameter probe

Description

Equipment for measuring water salinity, pH and temperature.

62/66

Resource

TYPE Material



Name

Multiparameter probe

Description

Equipment for measuring water salinity, pH and temperature.

63/66

InMoz
PTDC/HAR-ARQ/28146/2017



centro
ciência viva
algarve

InMoz
PTDC/HAR-ARQ/28146/2017



centro
ciência viva
algarve

InMoz
PTDC/HAR-ARQ/28146/2017



centro
ciência viva
algarve

InMoz
PTDC/HAR-ARQ/28146/2017



centro
ciência viva
algarve

InMoz
PTDC/HAR-ARQ/28146/2017



centro
ciência viva
algarve

InMoz
PTDC/HAR-ARQ/28146/2017



centro
ciência viva
algarve

InMoz
PTDC/HAR-ARQ/28146/2017



centro
ciência viva
algarve

InMoz
PTDC/HAR-ARQ/28146/2017



centro
ciência viva
algarve

InMoz
PTDC/HAR-ARQ/28146/2017



centro
ciência viva
algarve

Resource

TYPE Material



Name

Sediment corer

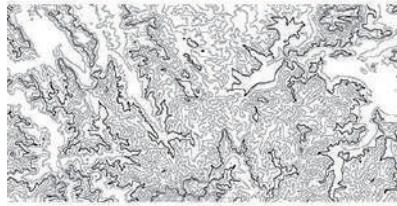
Description

Equipment for collecting vertical cores from the sediment layers at the bottom of lakes.

64/66

Resource

TYPE Material



Name

Digital elevation model

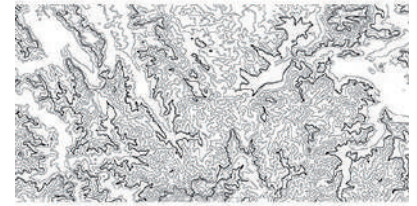
Description

A representation of land surfaces and changes in elevation.

65/66

Resource

TYPE Material



Name

Digital elevation model

Description

A representation of land surfaces and changes in elevation.

66/66

Dune

INDICATOR Archaeological sites



Material resource

GPS

Human resource

Archaeologist

Description

By mapping various archaeological sites among the dunes, we can see if settlement patterns were related to environmental factors.

64/66

Dune

INDICATOR Archaeological sites



Material resource

Drone

Human resource

GIS Specialist

Description

By mapping various archaeological sites among the dunes, we can see if there was a change in settlement patterns over time in relation to environmental changes.

65/66

Dune

INDICATOR Archaeological sites



Material resource

GPS

Human resource

Archaeologist

Description

By mapping various archaeological sites among the dunes, we can see if there was a change in settlement patterns over time in relation to environmental changes.

66/66

Lake

INDICATOR Shape of the lake



Material resource

GPS

Human resource

GIS Specialist

Description

Accurate information about the lake's morphology helps us decide the best place to take a sediment core.

64/66

Lake

INDICATOR Shape of the lake



Material resource

GPS

Human resource

GIS Specialist

Description

Lakes in Inhambane have formed in depressions between the sand dunes.

65/66

Lake

INDICATOR Shape of the lake



Material resource

Digital elevation model

Human resource

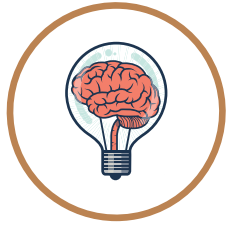
Geomorphologist

Description

Lakes in Inhambane have formed in depressions between the sand dunes.

66/66

InMoz
PTDC/HAR-ARQ/28146/2017



centro
ciência viva
algarve

InMoz
PTDC/HAR-ARQ/28146/2017



centro
ciência viva
algarve

InMoz
PTDC/HAR-ARQ/28146/2017



centro
ciência viva
algarve

InMoz
PTDC/HAR-ARQ/28146/2017



centro
ciência viva
algarve

InMoz
PTDC/HAR-ARQ/28146/2017



centro
ciência viva
algarve

InMoz
PTDC/HAR-ARQ/28146/2017



centro
ciência viva
algarve

InMoz
PTDC/HAR-ARQ/28146/2017



centro
ciência viva
algarve

InMoz
PTDC/HAR-ARQ/28146/2017



centro
ciência viva
algarve

InMoz
PTDC/HAR-ARQ/28146/2017



centro
ciência viva
algarve